

RESUMPTION OF MUTAGENICITY IN VICIA AFTER SECONDARY TREATMENT OF SEWAGE WATER

**Abd El- Migid, H. M.; Abdel-Wahed, A. A.;
Shaaban- Dessouki, S. A. and Abd El-Rahman, H. M. H.**

Botany Department , Faculty of Science, Mansoura University, Egypt

ABSTRACT

The objective of this study was to evaluate the mutagenic potentialities of two samples of water from different sources namely: raw sewage, treated sewage. Genotoxicity test was conducted using two varieties of Vicia faba var; Giza 3 and var. Giza Blanca). Several endpoints were used to estimate the mutagenic activity in Vicia cells such as: 1-mitotic activity 2-nuclear abnormalities and 3-chromosomal aberrations.

Chemical analysis revealed the inefficient treatment of sewage where, many elements increased after secondary treatment, and even those elements which decreased did not reach the safe limits for use. Genotoxicity test exhibited change in mitotic activity with all water samples, either by decrease in the mitotic index in Vicia var. G. 3 or increase in case of Vicia var. G. Blanca. Many types of chromosomal aberrations and nuclear irregularities were also produced after all treatments. The most frequent aberration was chromosome stickiness among different types of abnormalities such as: micronucleus, banded chromosomes, bridges, laggard chromosomes and ring chromosome. The higher percentage of chromosomal aberrations exhibited by raw sewage. The current data demonstrated the occurrence of mutagenic compounds in sewage water after secondary treatment and this requires further treatment to remove them. Moreover, their application to irrigate agricultural land must be stopped because of the mutagenic effects of plants irrigated by such waters.

Keywords: Sewage water, genotoxicity, Vicia test,

INTRODUCTION

Water pollution is a serious problem worldwide for the health of the biota and humans that interact with these aquatic ecosystems because of the presence of genotoxic compounds (Vargas et al., 2001; Ohe et al., 2003; Buschini et al., 2004). Because of the importance of water quality to health, many toxicity and genotoxicity tests have been used in combination with physical and chemical analysis in order to evaluate both water and environ-

mental quality (Isidori et al., 2004; Vargas et al., 2001; Umbuzeiro et al., 2001). Water quality is an important risk factor in causing cancer that has been estimated in areas supplied with polluted drinking water. The observed exposure-response relationship indicated a relative risk for lymphomas, pancreatic cancer and esophageal cancer compared with areas in which non-mutagenic drinking water was consumed (Koivusalo et al., 1995; Tao et al., 1999).

The decision to use treated sewage water (effluent) for irrigation of crops has been adopted in many Mediterranean and Middle East countries and in much other semi arid areas across the world. In Egypt, there are many examples of planned reuse of sewage effluent e.g. Gabal-El Asfar Old farm, El-Saff and Nubaria areas (Hall and El-Hakeh, 1999, and El-Bagouri, 1999). However, many researchers proved that, sewage water may contain a wide variety of chemicals, detergents, pesticides, fats and heavy metals (Katyal and Satake, 1996; Rogers, 1996; Sheded and Soliman, 2001). Although, some of the toxic elements may be removed during the treatment process, others will persist and could present phytotoxic problems. Different systems have been used for wastewater treatments. The most appropriate wastewater treatment to be applied before effluent use in agriculture is one which produces an effluent meeting the recommended microbiological and chemical quality guidelines both at low cost and with minimal operational and maintenance requirements (Arar, 1988). Either preliminary, primary, secondary, tertiary and/or advanced wastewater treatment.

Many types of genotoxicity and mutagenicity assays employing microorganisms and mammalian cells have used for monitoring of complex environmental samples (Verschaeve, 2002; Isidori et al., 2004; Reinecke and Reinecke, 2004; Russo et al., 2004). However, plant assays, such as the *Vicia faba* test, may have some advantages over microbial and mammalian cell tests for environmental monitoring. Plant assays are highly sensitive to many environmental pollutants, including heavy metals (Fiskesjo, 1988), and have been used for monitoring the potential synergistic

effects of mixtures of pollutants, including hydrophilic and lipophilic chemicals (Grover and Kaur, 1999; Ateeq et al., 2002; Rank et al., 2002; DeCampos and Viccini, 2003). Furthermore, the test plants can be directly exposed to complex mixtures or environmental samples either in the laboratory or in situ (Rank, 2003). Because of the large size of their chromosomes, higher plants are suitable for cytological analysis and the responses seen in plant tests are highly correlated with those seen in other biological systems, making plant tests good candidates for evaluating the genotoxicity of environmental samples (Grant, 1999; Sadowska et al., 2001; Majer et al., 2005). *Faba bean* (*Vicia faba*) root-tip cells can be used to measure a variety of cytogenetic factors that can be used as toxicity indicators, such factors including mitotic index determination, chromosome and nuclear abnormalities.

The main goal of this study was to assess the efficiency of the secondary treatment process of sewage water for use as an alternative source of irrigation of the cultivated crops and plants especially in newly reclaimed areas, by using cytogenetic approach.

MATERIALS AND METHODS

1. Sampling :

Sewage water (treated and raw) was collected from Mansoura station of water sanitation regularly every two weeks using non metallic sampler. The samples were kept in the dark until reaching the laboratory.

2. Chemical analysis :

On the same sampling day, all water samples were filtered (except those which used for estimation dissolved oxygen and biological

oxygen demand). Physicochemical analyses of water samples were carried out for all different stages of wastewater treatment. For each water sample collected for the mutagenicity studies, measurements of Electric conductivity (E.C.), pH, % salinity, dissolved oxygen (D.O.), total alkalinity, total hardness, biochemical oxygen demand (BOD), chemical oxygen demand (COD), were measured. Elements such as: sodium, potassium, calcium, sulphate, phosphorus, and chlorides were also measured. Moreover, concentrations of some heavy metals such as copper, cadmium, cobalt, lead, zinc and iron using atomic absorption spectro-photometer were estimated (Perkin Elmer, 2380). The parameters analyzed represent the removal efficiency of the nutrients in sewage.

3. Field experiments :

For cytogenetic analysis two varieties of broad bean (*Vicia faba*, var. Giza 3 and var. Giza Blanca), were obtained from Agriculture Research Center, Legume and Onion, Research Sections, Giza, Egypt.

In situ assay was carried out in the garden of Faculty of Science, Mansoura University. The selected seeds of the two *Vicia* varieties were surface sterilized in 1% HgCl_2 solution, and soaked in tap water for 24 hours before being planted. Big pots were filled with a mixture of clay and sand at a ratio of 2:1 (v/v). This soil was cleaned from grasses and other plant debris and left exposed to air for a week before being distributed into the experimental pots. The presoaked seeds were planted in pots (about 10 seeds per pot), irrigated with tap water for two weeks until seedlings appeared, and seedlings were thinned into 4 or

5 plants per pot. The planted pots were separated into 3 groups one for each treatment: raw sewage, treated sewage) and tap water as a control set. Six replicate pots were used for each treatment and follow the changes and variations in each treatment (growth, flowering and fruiting). After maturation, M1 generation harvest seeds were used for laboratory cytogenetic analysis.

4. Genotoxicity test

Three sets of *V. faba* (parental and M1 generation) seeds were grown in 6 replicate pots as described above. The plants were irrigated by water samples. Tap water was used as control. Radicals (about 1 cm long) were excised, fixed, stained and squashed as described by Kihlman, (1971) and Panda and Sahu, (1985). The slides were made permanent by using Canada balsam and microscopically examined under to calculate the mitotic index and score the chromosomal aberrations and nuclear (interphase) irregularities.

5. Statistical analysis of data :

SPSS program was used to determine means and standard deviations from repeated samples (5) of each of the experimental groups. Least Significance Difference (L.S.D.) was used to determine significance ($p=0.05$) in the data compared to the control.

RESULTS AND DISCUSSION

1. Chemical Analysis

Physicochemical analysis of the studied water samples is illustrated in Figs. (1& 2). It included values for E.C., pH, % salinity, D.O., C.O.D., total alkalinity, total hardness and B.O.D., sodium, potassium, calcium, sulphate, phosphorus, total nitrogen and chlo-

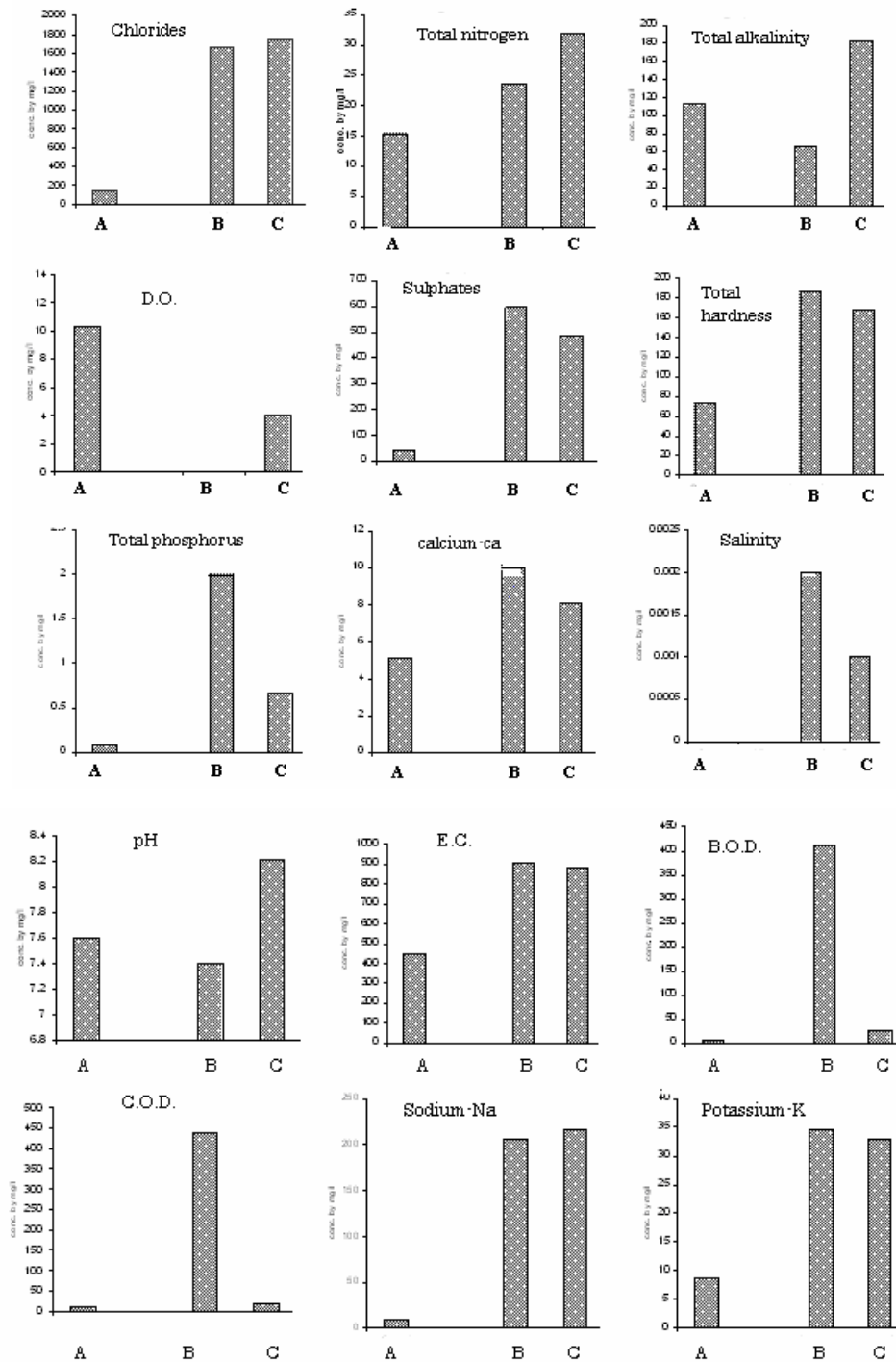


Fig.. (1) :Physicochemical analysis of the studied sewage samples. A: control ;B: untreated sewage; C: treated sewage (conc. by mg/l).

RESUMPTION OF MUTAGENICITY IN VICIA AFTER etc

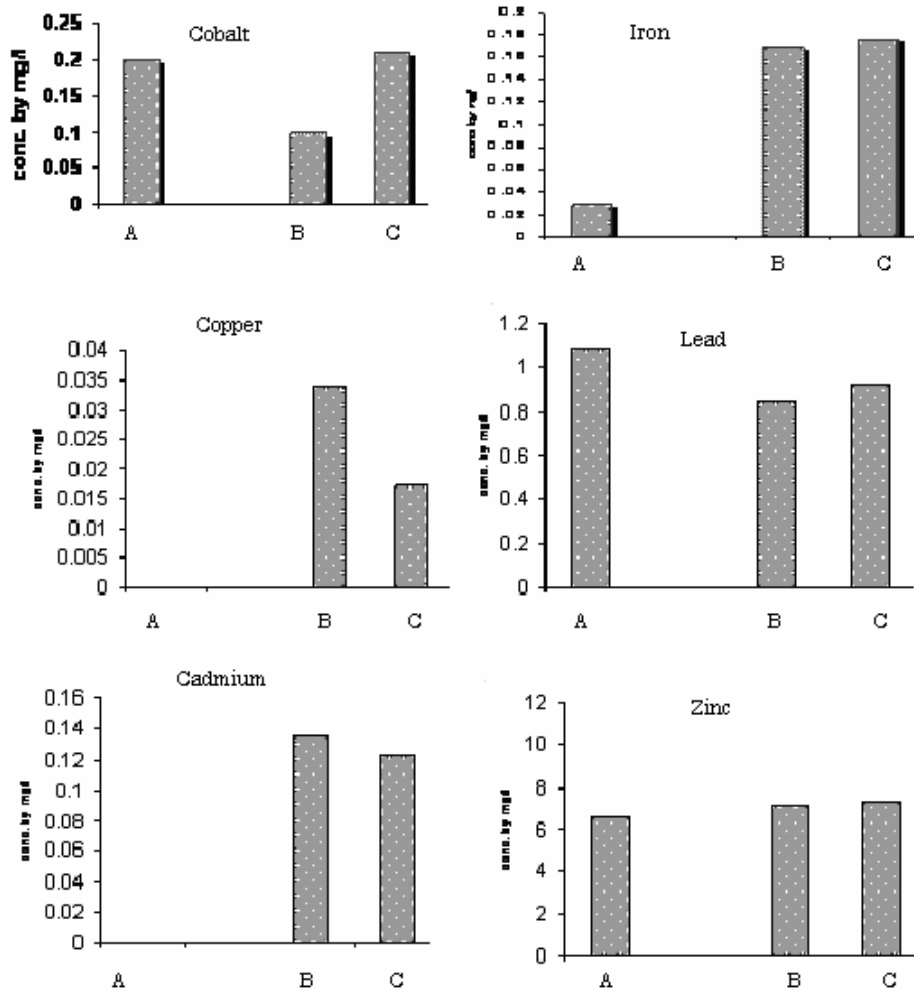


Fig. (2): Chemical analysis of heavy metals in sewage samples . A: control ; B: untreated Sewage; C: treated sewage (conc. by mg/l).

rides and the concentrations of copper, cadmium, cobalt, lead, zinc and iron.

In general, chemical analysis of the water samples revealed that the concentrations of many estimated elements and parameters exceeded the safety limits for raw and treated sewage. The values of some physical and chemical parameters increased as well as after the secondary treatment of raw sewage. The data showed that treatment of raw sewage led to increase of concentrations of some elements such as chlorides, total nitrogen, cobalt and iron. pH was also increased after treatment. Whereas, concentrations of other elements decreased after secondary treatment such as sulphate, potassium and cadmium but they were still above the safety permissible range. This indicated the inefficiency of the treatment process and further treatment needed before use in agriculture.

Among the physical parameters, DO values decreased in both raw and treated sewage indicating the organic wastes contamination (Juttner et al., 1996). Also, COD in raw sewage was very high which was found to be correlated with genotoxicity in *Vicia faba* (Sang and Li, 2004). The obtained data showed an increase of pH (i.e., increase in alkaline wastes) after secondary treatment of sewage as previously reported by Pratt, (1972). On the other hand, agricultural wastes lead to increase in phosphorus level which is reported in case of raw sewage (Shaaban-Dessouki et al., 1993). Chlorination is a common water disinfectant method which is able to reduce microbial water pollution, but which can also produce genotoxic and toxic compounds if precursors are present in the water to be

treated and the level of chlorine is high (Komulainen, 2004). Most of chlorination by-products are known carcinogens (Komulainen, 2004). Some authors have also used plant assay to assess the genotoxicity induced by the by-products of disinfection, with positive results having been obtained in *Allium cepa* and *Tradescantia* assays (Monarca et al., 2005). In the present study chlorides were found in unsafe limits in all water samples with higher percentage in treated sewage (Fig.1).

The concentrations of heavy metals (Fig. 2) showed that there were high levels of potentially toxic metals such as zinc, cobalt, lead, cadmium, copper and others in both sewage water samples. In particular, high concentrations of potentially toxic metals were detected in the treated sewage water which displayed consistently high levels of genotoxicity. Copper and cadmium were higher in raw sewage whereas treated sewage showed higher cobalt, Zinc and iron. Surprisingly, control samples showed higher concentration of lead compared to the other samples (This may be due to the leakage of lead from lead pipe). Several studies on plant assays have indicated that the heavy metals present in such sewage water either in its treated or raw sewage forms may accumulate in the soil or could be taken up by the roots of the cultivated plant organs. Therefore, they making plant organs hazard for use in feeding animals and /or man (Bohec and Bohec, 1990).

2. Nuclear irregularities :

Nuclear abnormalities in interphase cells of parental seeds in both varieties were recorded in Table (2). Generally, the total nu-

RESUMPTION OF MUTAGENICITY IN VICIA AFTER etc

Table 1 : Comparison between original (parental) and M1 *Vicia* seeds by % mitotic index (Mean \pm S.D., * = significant at p=0.05)

Treatment	%M. I. of <i>vicia</i> Varieties			
	Giza B.		Giza 3	
	Original	M1	Original	M1
Control	15.7 \pm 1.03	19.9 \pm 0.96	20.2 \pm 0.76	21.3 \pm 1.04
Treated sewage	17.2 \pm 1.52	16.0 \pm 0.79*	17.1 \pm 1.67*	17.0 \pm 0.79*
Raw sewage	18.0 \pm 1.7*	14.2 \pm 0.75*	16.7 \pm 0.57*	14.9 \pm 0.96*

Table (2) : Different types of abnormalities in interphase of *Vicia faba* parental seeds. (Mean \pm S.D., * = significant at p=0.05).

Treatment	%Abnormalities				% total Abnormalities	
	Micronucleus		Binucleated cell		G.3.	G.B.
	G.3.	G.B.	G.3.	G.B.		
Control	1.2	2.2	0.2	1.0	0.88 \pm 0.34	1.9 \pm 0.87
Treated sewage	2.4	3.8	1.6*	1.6	2.42 \pm 1.22*	3.38 \pm 0.85*
Raw sewage	5.4*	3.6	0	0.4	3.24 \pm 0.53*	3.9 \pm 2.29*

clear abnormalities increased in both varieties after both treatments. In case of var. G.3., two types of abnormalities were recorded, micronucleus and binucleated cells (plate 1). Raw sewage induced a significant percentage of micronuclei (5.4%), whereas non significant percentage exhibited by treated sewage (2.4%). Nuclear abnormalities in cells of M1 seeds are recorded in Table (3). The highest significant increase of total nuclear abnormalities occurred in seeds of var.G.B. treated with

treated sewage (4.51%) whereas raw sewage exhibited less increase (2.79%) compared to control (2.12%). The formation of micronuclei is a true mutagenic effect and is a reliable parameter for chromosomal aberration in *Vicia faba* (Sang and Li, 2004). An increase in the frequency of micronucleated cells is considered a result of chromosomal and genomic damage caused by clastogens or spindle poisons (Russo et al., 2004). The formation of multinucleated cells may be the result of a

Table (3) : Different types of aberrations in interphase of *Vicia faba* M1 seeds. (Mean \pm S.D., * = significant at $p=0.05$).

Treatment	% Abnormalities				% total Abnormalities	
	Micronucleus		Bi/multinucleated cell		G.3.	G.B.
	G.3.	G.B.	G.3	G.B.		
Control	3.8	2.8	0	0.6	2.42 \pm 0.83	2.12 \pm 1.3
Treated sewage	3.8	6.0*	0.8	1.6	2.76 \pm 0.53	4.51 \pm 1.69*
Raw sewage	3.4	4.4	1.0	0.4	2.58 \pm 1.05	2.79 \pm 0.76

preceding multipolar mitosis or the failure of cell plate formation, (Grover and Kaur, 1999).

2. 3. Chromosomal Aberrations in mitosis (CA)

Results of mitotic chromosomal aberrations are recorded in Table (4) and shown in Plates (2, 3, 4 and 5). Total percentage of chromosomal aberrations is significantly increased in mitotic cells of parental and M1 seeds in both varieties after all treatments. Chromosomal aberrations included: micronu-

clei, banded chromosome, stickiness, splitting metaphase, bridges, laggard chromosome, ring chromosome, C-metaphase and disturbed metaphase.

In the present study, different types of the observed aberrations in mitotic cells were probably due to the effect of genotoxic compounds found in the studied sewage water samples. Such toxic compounds (household chemicals, detergents, chlorophenols, trace elements, heavy metals etc.) caused drastic

Table 4 : The frequencies of chromosomal aberrations for parental/M1 seeds in G.B. and G3 varieties of *Vicia* (Mean \pm S.D., * = significant at $p=0.0$).

Treatment	% Chromosomal aberrations			
	G. B.		G. 3	
	Parental	M1	Parental	M1
Control	25.66 \pm 5.92	13.91 \pm 6.67	16.34 \pm 5.56	12.06 \pm 6.39
Treated sewage	46.48 \pm 9.88*	37.77 \pm 10.16 *	50.98 \pm 10.13*	40.32 \pm 7.54*
Raw sewage	52.78 \pm 14.73*	40.48 \pm 9.13*	75.38 \pm 9.48*	48.56 \pm 11.96*

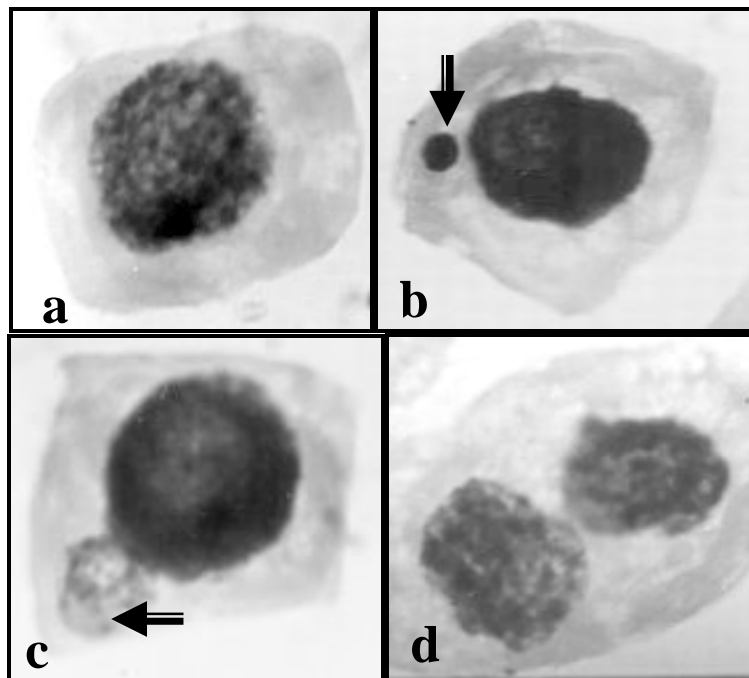


Plate (1): nuclear abnormalities in *Vicia faba*, a-normal, b-c- micronucleus, d- binucleated cell.

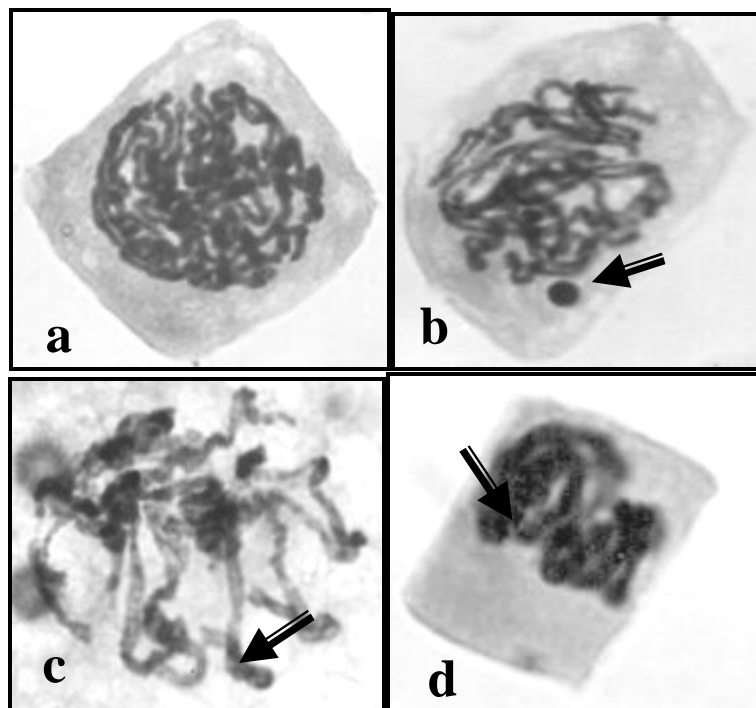


Plate (2): prophase of *Vicia faba*, a-normal, b- micronucleus, c-banded chromosome, d-stickiness.

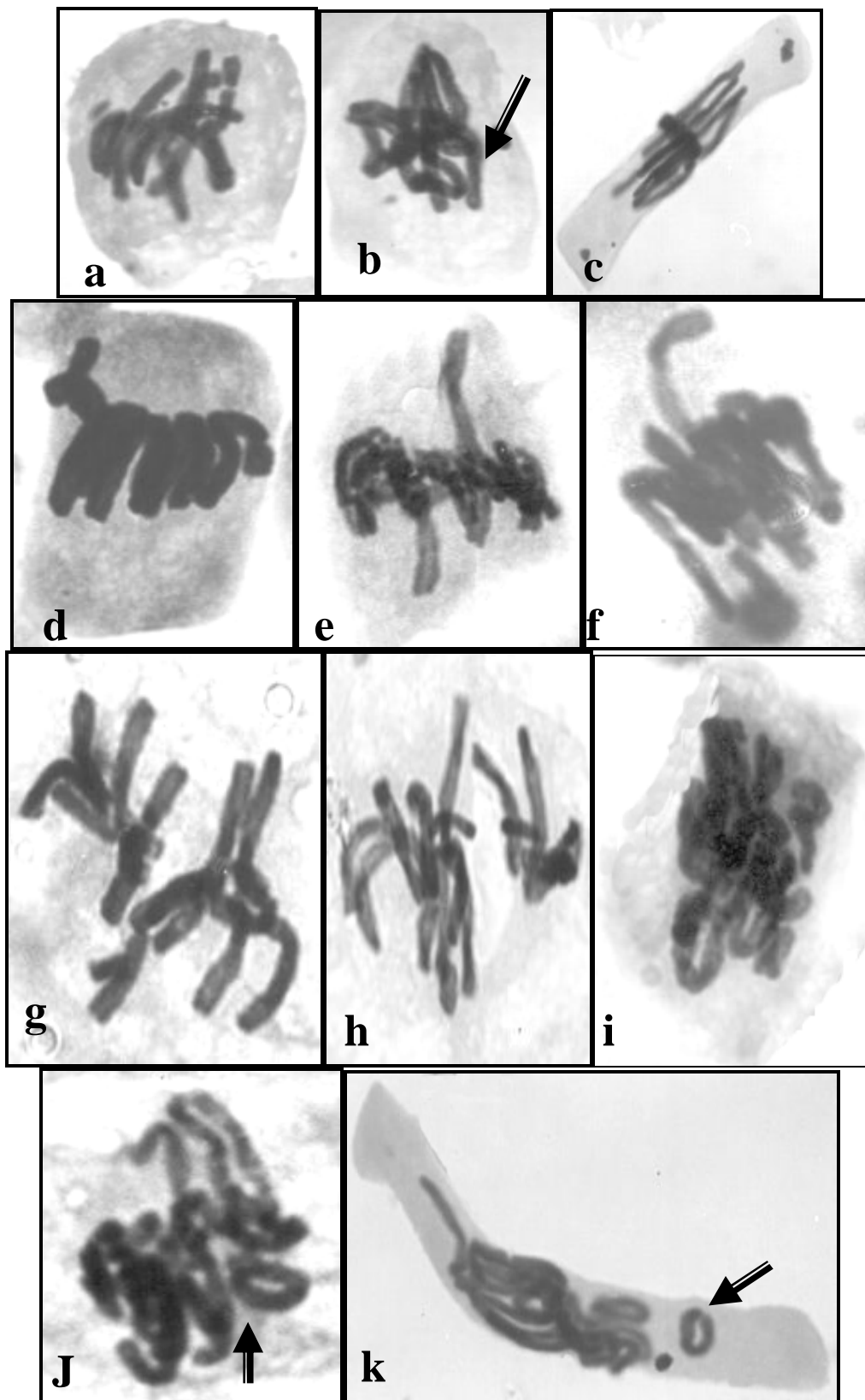


Plate (3): *Vicia faba* metaphase, a-normal, b-c-micronucleus, d-e-f-misorientation, g-h-split, i-stickiness, j-k-ring chromosome.

RESUMPTION OF MUTAGENICITY IN VICIA AFTER etc

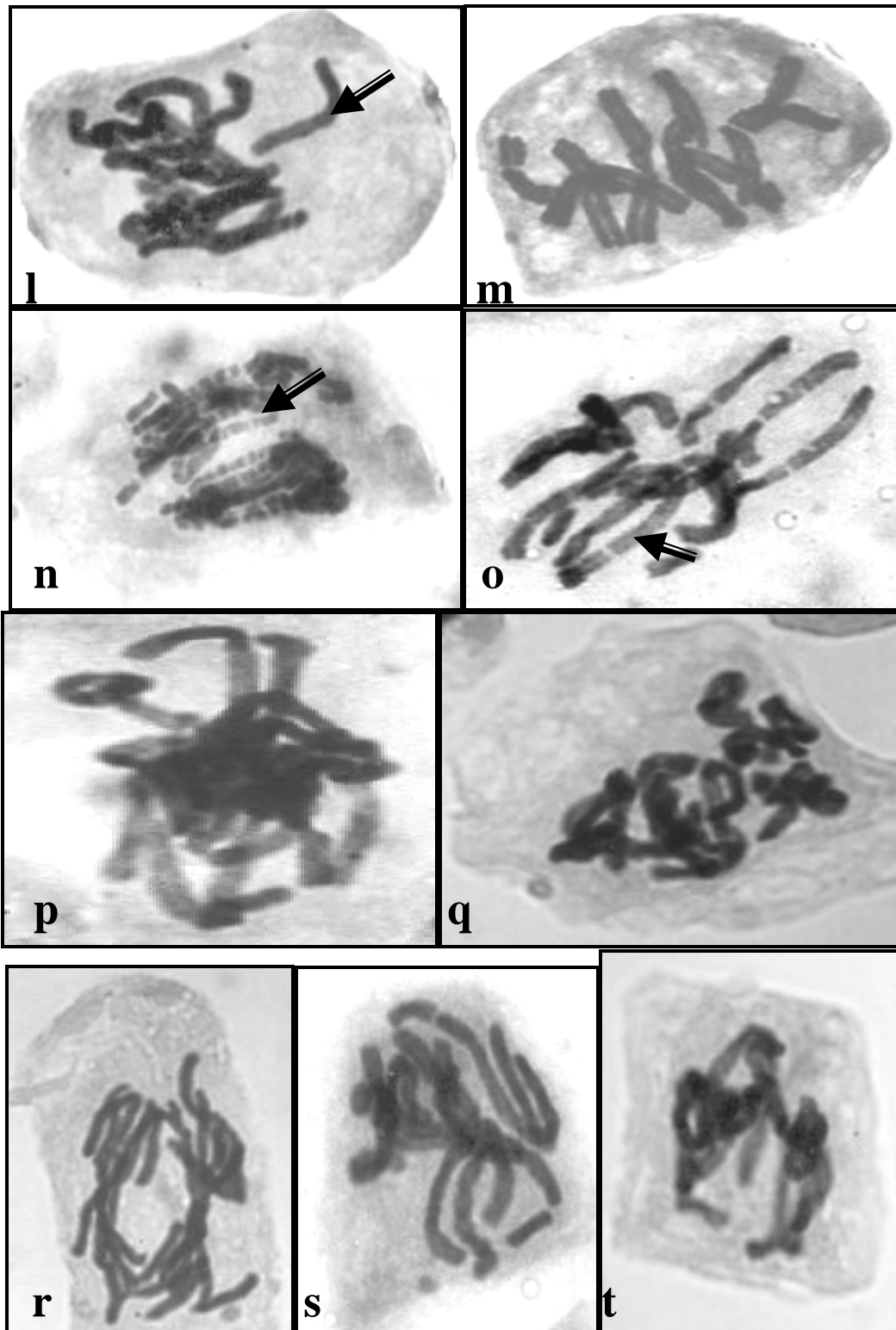


Plate (4): *Vicia faba* metaphase, i-forward chromosome, m- C- metaphase, n-o-banded chromosome, p-t -disturbed metaphase.

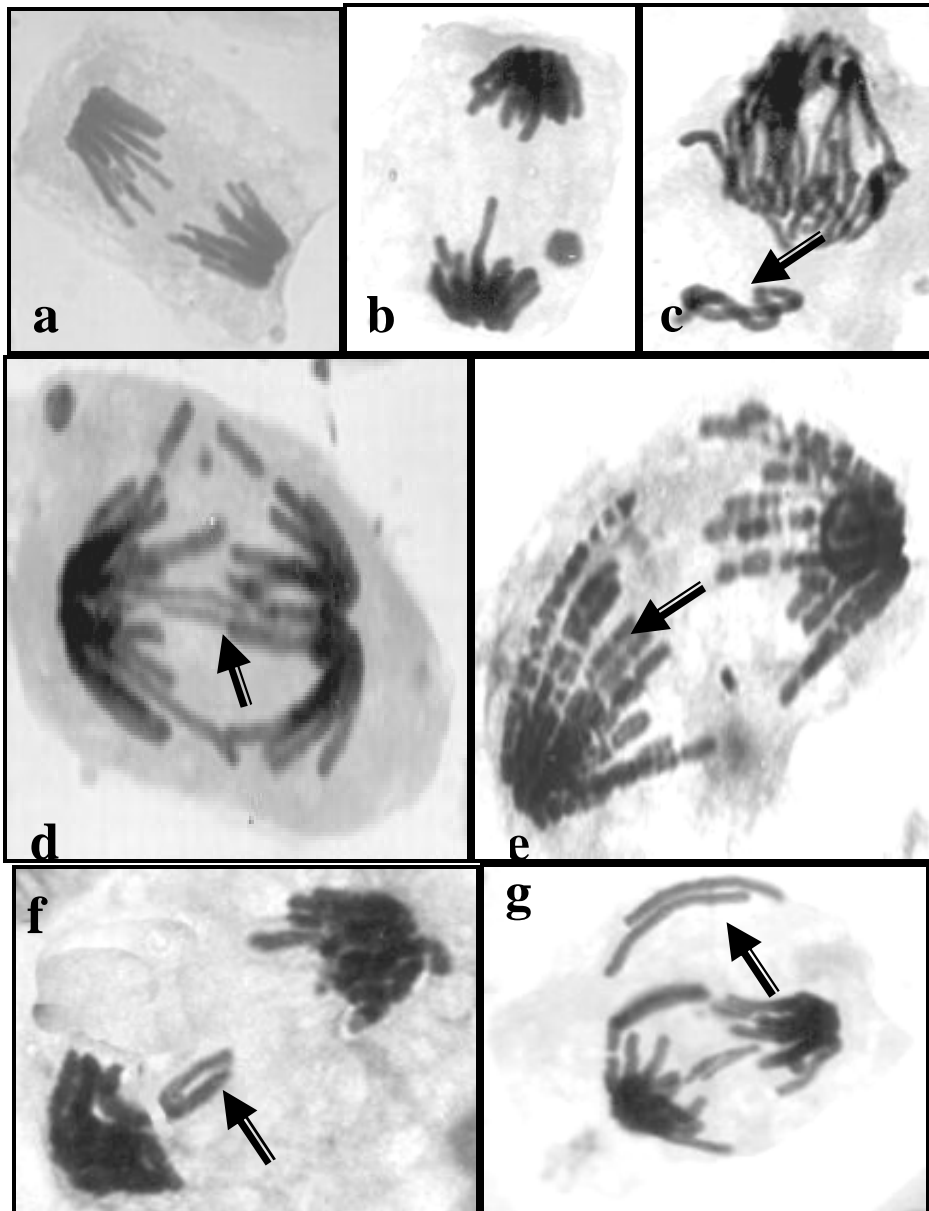


Plate (5) :*Vicia faba* anaphase, a-normal, b-micronucleus, c-f-g-laggard chromosome, d-bridge with micronucleus, e-banded chromosome,

changes in chromatin, spindle apparatus and centromeres, leading to impairment of chromosome alignment on to metaphase plate, abnormal spindle orientation, abnormal chromosome movement and c- mitosis.

Potentially toxic metals, resulting from some agricultural and industrial activities are known to induce chromosome breaks, fragments and micronucleus formation in plants and mammalian test systems (Knasmuller et al., 1998). Among the effects induced are formation of DNA - DNA and DNA - protein cross-links, alterations of mitotic spindles formation producing aberrant mitotic stages, and induction of sister chromatid exchanges (SCE). The induction of micronuclei is usually caused by chromosome breaks or fragments or spindle poisoning, which is an anomalous disjunction of chromosomes during anaphase. Several metals have been shown to be mutagenic and/or carcinogenic in both human and animal studies. They increase the risk of cancer, especially lung and skin cancers (Harris and Shi, 2003; Leonard et al., 2004). Plant assays have been considered useful tools for evaluating and ranking the toxicity and genotoxicity of metals (Evseeva et al., 2003; Chandra et al., 2005; Unyayar et al., 2006). Metals such as iron and copper can also cause indirect effects due to increased oxidative stress leading to cytotoxicity and DNA damage (Costa et al., 2002), (Waisberg et al., 2003; Unyayar et al., 2006). These finding are confirmed by the results obtained in this study where metals are recorded in unsafe concentration in sewage (raw and treated). Some of them such as zinc exert toxic action resulting in mutations that persist in the M2 generation

(El Ghamery et al., 2003). Although all the treated water samples showed some degree of genotoxicity compared to the raw sewage water, raw sewage appeared to be the most damaging as evidenced by its capacity to induce an increased frequency of chromosome abnormalities. The water sample obtained after treatment of the sewage water produced a statistically significant increase of abnormal mitotic cells frequencies. However, overall it was less toxic and genotoxic than the raw water samples. These data indicate the presence of cytotoxic and genotoxic substances in the raw sewage water that are reduced by the water treatment process.

CONCLUSION

The toxic effects of the studied water samples, particularly, sewage water (raw and treated), on the mitotic activity paralleled their effects on nucleus and chromosomal behavior. The treatments caused an increase in the percentage of the total abnormalities in the meristematic cells of Vicia roots. Although some treatments did not produce a significant genotoxic response, there was some indication of genotoxic potential. This proof their cytotoxicity and mutagenicity especially if they are used in irrigation in case of treated sewage. It is highly recommended that sewage water need more advanced treatments and heavy metals should be lowered before being used for irrigation, where these pollutants might enter into the food chain and cause health hazards to humans. So, we can achieve safety results for irrigated soil, drainage canals, underground water, farm animals and consequently human safety and welfare.

REFERENCES

- Aleem, A.; Isar, J. and Malik, A. (2003) :** Impact of long-term application of industrial wastewater on the emergence of resistance traits in *Azotobacter chroococcum* isolated from rhizospheric soil. *Biores. Technol.* 86,pp.713.
- Arar A. (1988) :** Background to treatment and use of sewage effluent. Ch. 2, Treatment and Use of Sewage Effluent for Irrigation, M.B. Pescod and A. Arar (eds). Butterworths, Sevenoaks, Kent.
- Ateeq B.; Farah M. A.; Ali M. N. and Ahmad W. (2002) :** Clastogenicity of pentachlorophenol, 2,4-D and butachlor evaluated by *Allium* root tip test. *Mutat Res.*, 514:105-113.
- Bohec, J. - Le and Le- Bohec, J. (1990) :** The use of urban composts for vegetable crops. *Infos-Paris.* 61: 23- 28.
- Buschini, A.; Martino, A.; Gustavino, B.; Monfrinotti, M.; Poli, P.; Rossi, C.; Santoro, A.; Dorr, A. M. and Rizzoni, M. (2004) :** Comet assay and micronucleus test in circulating erythrocytes of *Cyprinus carpio* specimens exposed in situ to lake waters treated with disinfectants for potabilization. *Mutat Res.*, 557:119-129.
- Chandra, S.; Chauhan, L. K.; Murthy, R. C.; Saxena, P. N.; Pande, P. N. and Gupta S. K. (2005) :** Comparative biomonitoring of leachates from hazardous solid waste of two industries using the *Allium* test. *Sci Total Environ.*, 347:46-52.
- Costa, M.; Salnikow, K.; Sutherland, J. E.; Broday, L.; Peng, W.; Zhang, Q. and Kluz, T. (2002) :** The role of oxidative stress in nickel and chromate genotoxicity. *Mol Cell Biochem* 235:265-75.
- De Campos, J. M. S. and Viccini, L. F. (2003).** Cytotoxicity of aluminum on meristematic cells of *Zea mays* and *Allium cepa*. *Caryologia*, 56:65-73.
- El-Bagouri, I. H. (1999) :** Potentials and constraints of the reuse of waste water in desert agriculture. Final report of land and water. Management Programmed, Center for Environmental And Developmental for The Arab Region and Europe (CEDARE). pp: 1-16.
- El-Ghamery, A. A.; Mansour, M. M. and Abou EL-Yousser, M. A. (2003) :** Effect of some heavy metals on mitotic activity, nucleic acids content and protein banding pattern in meristematic roots of *Nigella sativa* and *Triticum aestivum*, Egypt, *J. Biotechnol.* 11 : 266-281.
- Evseeva, T. I.; Geras'kin, S. A. and Shuktomova, I. I. (2003) :** Genotoxicity and toxicity assay of water sampled from a radium production industry storage cell territory by means of *Allium*-test. *J Environ Radioact.*, 68:235-248.
- Fiskesjo, G. (1988) :** The *Allium* test - An alternative in environmental- studies The relative toxicity of metal-ions. *Mutat Res* 197:243-260.
- Fiskesjo, G. (1993) :** The *Allium* test in wastewater monitoring. *Environ.Toxicol.Water Qual* .,8: 291-298.

Ghoneim, G. T. (2003) : Cytological and physiological studies on the effect of some herbicides on Flax. M. Sc. Thesis, Fac. Sci. (Damietta), Mansoura Univ. Mans. Egypt.

Grant, W. F. (1999) : Higher plant assays for the detection of chromosomal aberrations and gene mutations - A brief historical background on their use for screening and monitoring environmental chemicals. *Mutat Res* 426:107-112.

Grover I. S. and Kaur S. (1999) : Genotoxicity of wastewater samples from sewage and industrial effluent detected by the Allium root anaphase aberration and micronucleus assays. *Mutat Res.* 426:183-188.

Hall, J. and El-Hakeh, H. (1999) : The Alexandria Effluent and sludge reuse study. In Fourth International water Technology Conference (IWTC) 99, Alexandria, Egypt, pp: 313-323.

Harris, G. K. and Shi, X. (2003) : Signaling by carcinogenic metals and metal-induced reactive oxygen species. *Mutat Res.*, 533:183-200.

Hossni, Y. A. and El-Tarras, A. (1997) : Safety of sewage water in the irrigation of plants, *Egyptian Journal of Horticulture.* 24 (2) : 261-270.

Isidori, M.; Lavorgna, M.; Nardelli, A and Parrella A (2004) : Integrated environmental assessment of Volturno River in South Italy. *Sci Total Environ.*, 327:123-134.

Juttner, I.; Rothfritz, H. and Ormerdo,

S. J. (1996) : Diatoms as indicators of river quality in Nepalese Middle Hills with consideration of the effects of habitat-specific sampling. *Fresh wat. Biol.*, 36 : 475-486.

Katyal, T. and Satake, M. (1996) : Environmental pollution. Animal Publications Pvt. ltd New Delhi pp. 65- 160.

Kihlman, B. A. (1971) : Root tips for studying the effect of chemicals on chromosomes, In: A. Hollander ed.. *Chemical mutagens*, Vol. 2, Plenum. New York, pp. 489-514.

Knasmuller, S.; Gottmann, E.; Steinkellner, H.; Fomin, A.; Pickl, C.; Paschke, A.; God, R. and Kundi, M. (1998) : Detection of genotoxic effects of heavy metal contaminated soils with plant bioassays. *Mutat Res.*, 420:37-48.

Koivusalo, M.; Vartiainen, T.; Hakulinen, T.; Pukkala, E. and Jaakkola, J. J. K. (1995) : Drinking-water mutagenicity and leukemia, lymphomas, and cancers of the liver, pancreas, and soft tissue. *Arch Environ Health*, 50:269-276.

Komulainen, H. (2004) : Experimental cancer studies of chlorinated by-products. *Toxicology*, 198:239-248.

Leonard, S. S.; Bower, J. J. and Shi, X. L. (2004) : Metal-induced toxicity, carcinogenesis, mechanisms and cellular responses. *Mol Cell Biochem* 255:3-10.

Majer, B. J.; Grummt, T.; Uhl, M. and Knasmüller, S. (2005) : Use of Plant Bi-

oassays for the Detection of Genotoxins in the Aquatic Environment. *Acta hydrochim. hydrobiol.*, 33 (1): 45-55.

Malik, A. and Ahmad, M. (2002) : Seasonal variation in bacterial flora of the wastewater and soil in the vicinity of industrial area. *Environ. Monit. Assess.*, 73:263-273.

Monarca, S.; Feretti, D.; Zani C, Rizzoni M, Casarella S and Gustavino B (2005). Genotoxicity of drinking water disinfectants in plant bioassays. *Environ Mol Mutagen.*, 46:96-103.

Ohe, T.; White, P. A. and DeMarini, D. M. (2003) : Mutagenic characteristics of river waters flowing through large metropolitan areas in North America. *Mutat Res Genet Toxicol Environ Mutagen.*, 534:101-112.

Panda, B. B. and Sahu, U. K. (1985) : Induction of abnormal spindle function and cytokinesis inhibition in mitotic cells of *Allium cepa* by organophosphorus insecticide fensulfothion. *Cytobios.*, 42 : 147-155.

Pratt P. F. (1972) : Quality criteria for trace elements in irrigation waters. California Agricultural Experiment Station. 46 p.

Rank J. (2003) : The method of *Allium* anaphase-telophase chromosome aberration assay. *Ekologija*, 1:38-42.

Rank, J.; Lopez, L. C.; Nielsen, M. H. and Moreton, J. (2002) : Genotoxicity of maleic hydrazide, acridine and DEHP in

Allium cepa root cells performed by two different laboratories. *Hereditas*, 136:13-18.

Reinecke, S. A. and Reinecke, A. J. (2004) : The comet assay as biomarker of heavy metal genotoxicity in earthworms. *Arch Environ Contam Toxicol.*, 46:208-215.

Rogers, H. R. (1996) : Sources, behavior and fate of organic contaminants during sewage treatment and in sewage sludges. *Sci. Total Environ.*, 185: 3-26.

Russo, C.; Rocco, L.; Morescalchi, M. A. and Stingo, V. (2004) : Assessment of environmental stress by the micronucleus test and the Comet assay on the genome of teleost populations from two natural environments. *Ecotox. Environ Safety*, 57:168-174.

Sadowska, A.; Pluygers, E.; Niklinska, W.; Maria, M. R. and Obidoska, G. (2001) : Use of higher plants in the biomonitoring of environmental genotoxic pollution. *Folia Histochem Cytobiol.*, 39:52-53.

Sang, N. and Li, G. (2004) : Genotoxicity of municipal landfill leachate on root tips of *Vicia faba*. *Mut. Res.*, 560(2): 123-134.

Shaaban-Dessouki, S. A.; Soliman, A. I. and Deyab, M. A. (1993) : Environmental characteristics and nutrients distribution in Damietta Estuary of the River Nile. *J. Environm. Sci.*, 6: 159-177.

Sheded, M. G. and Soliman, M. S. A. (2001) : Environmental Impact of Sewage Water on Soil Variables, *Ricinus communis* and *Helianthus annuus* Protein and Associated

Species. OnLine Journal of Biological Sciences 1 (11): 1046-1050.

Tao, X. G.; Zhu, H. G. and Matanoski, G. M. (1999) : Mutagenic drinking water and risk of male esophageal cancer: A population based case-control study. Am J Epidemiol 150:443-452.

Umbuzeiro, G. D.; Roubicek, D. A.; Sanchez, P. S. and Sato, M. I. Z. (2001) : The Salmonella mutagenicity assay in a surface water quality monitoring program based on a 20-year survey. Mutat Res. Genet Toxicol Environ Mutagen 49:119-126.

Unyayar, S.; Celik, A.; Cekic, F. O. and Gozel, A. (2006) : Cadmium induced genotoxicity, cytotoxicity and lipid peroxidation in *Allium sativum* and *Vicia faba*. Mutagenesis, 21:77-81.

Vargas, V. M. F.; Migliavacca, S. B.; de Melo, A. C.; Horn, R. C.; Guidobono, R. R.; Ferreira, I. and Pestana, M. H. D. (2001) : Genotoxicity assessment in aquatic environments under the influence of heavy metals and organic contaminants. Mutat Res. Genet Toxicol Environ Mutagen., 490 : 141-158.

Verschaeve, L. (2002) : Genotoxicity studies in groundwater, surface water, and contaminated soil. Environ Toxicol., 12:1247-1253.

Waisberg, M.; Joseph, P.; Hale, B. and Beyersmann, D. (2003) : Molecular and cellular mechanisms of cadmium carcinogenesis. Toxicology, 192:95-117. Associate Editor : Catarina S. Takahashi Cytotoxicity and genotoxicity of Pitimbu water 441.

(Received on 1 / 3 / 2009)

الملخص العربي

الكشف عن القدرة المطفرة لمياه الصرف الصحي المعالج باستخدام اختبار نبات الفول

هاله محمد عبدالمجيد حمدي عبدالرحمن

آمال أمين عبدالواحد سامي شعبان

كلية العلوم - قسم النبات - جامعة المنصورة

نتيجة لنقص الموارد المائية العذبة المطلوبة للاستخدام الآدمي وفي الري يتم استخدام مياه الصرف الصحي المعالجة في ري المحاصيل واستهدفت هذه الدراسة تحديد : القدرة المطفرة لعينات من مياه الصرف الصحي من مصدرين مختلفين أحدهما غير معالج والآخر مياه صرف معالج، وتم عمل اختبار السمية الوراثية باستخدام صنفين من نبات الفول (var. Giza 3, var. Giza Blanca) ، وقد تم إجراء التحليل الكيميائي لقياس العديد من العناصر الثقيلة (الحديد والكاديوم والكوبلت والزنك والرصاص والنحاس) بالإضافة للعديد من العناصر الأخرى مثل الكلريدات والكالسيوم وبعض القياسات مثل درجة الحموضة ومعامل التوصيل الكهربى وتأثيرها على النباتات كما تم عمل التحليل الوراثى الخلوى لتقدير معدل الانقسام الميتوزى والشذوذات الكروموسومية والنوية فى قمم جذور نبات الفول.

وقد أظهرت نتائج التحليل الكيميائى عدم فاعلية عملية المعالجة لمياه الصرف حيث زادت بعض العناصر بعد المعالجة عن حدود الأمان المطلوبة لاستخدامها فى الري، كما أدت معالجة قمم الجذور النامية بعينات من المصادر المختلفة إلى :

١- نقص واضح فى معدل الانقسام فى نبات الفول صنف (Giza 3) بينما زاد معدل الانقسام فى نبات الفول صنف (Giza Blanca).

٢- زيادة فى نسبة الشذوذات الكروموسومية والنوية، وقد أظهرت مياه الصرف غير المعالج أعلى نسبة من الشذوذات الكروموسومية.

ونظراً للتأثير الواضح يوصى بعدم استعمال مياه الصرف الصحي سواء المعالجة ثانوياً أو مياه الصرف الصحي غير المعالجة التى أثبتت النتائج وجود مركبات مطفرة بها فى الاستخدام لرى النباتات التى تؤكل، ولذلك فإنه يجب أن تشمل الدراسات اللاحقة الدرجات المختلفة من عمليات المعالجة ومحاولة استخدام مؤشرات أخرى مثل دراسة point mutation.

ISSN 1110-192X

JESMUE 5



**RESUMPTION OF MUTAGENICITY IN VICIA AFTER
SECONDARY TREATMENT OF SEWAGE WATER**

**Abd El- Migid, H. M.; Abdel-Wahed, A. A.;
Shaaban- Dessouki, S. A. and Abd El-Rahman, H. M. H.**

Botany Department , Faculty of Science, Mansoura University, Egypt

Reprint

from

Journal of Environmental Sciences, 2010; Vol. 39



Journal Web Address

Jenvsci@mans.edu.eg

THE UNIVERSITY OF MANSOURA - EGYPT