

## **GROWTH YIELD AND NUTRIENTS UPTAKE BY WHEAT PLANTS AS AFFECTED BY PHOSPHORUS LEVELS AND MYCORRHIZAL INOCULATION UNDER SALINE CONDITIONS**

**El-Hamdi, K. H. ; A. A. Mosa and M. E. Rady**  
Soils Department, Faculty of Agriculture, Mansoura University

### **ABSTRACT**

There is an inability in facilitating phosphorus under Egyptian soil conditions. For this purpose, a pot experiment was conducted at the experimental farm Faculty of Agric., El-Mansoura Univ. during the winter season of 2008-2009 to investigate the uptake of applied and residual phosphorus by wheat (*Triticum aestivum* L.) plants as affected by mycorrhizal inoculation under saline condition. Phosphorus was applied at four rates of 0, 50, 75 and 100 Kg/feddan as single super phosphate (15.5%P<sub>2</sub>O<sub>5</sub>) under three levels of salinity (1, 6 and 9 dSm<sup>-1</sup>). Arbuscular mycorrhizal (AM) fungi was used as a mixture including (*Glomus mossea*, *Glomus intraradices* and *Glomus clarium*). The results of this investigation revealed that; with AM inoculation, the mean values of N, P and K% in shoot and roots and Na% in roots were significantly increased. Also, with AM inoculation, the mean value of Na% in shoots decreased. This trend was true during both stages of planting. On contrast, in non- mycorrhizal inoculated plants the illustrated average of N, P and K% in wheat shoot and roots were significantly decreased as the level of salinity increased. On the other hand, the mean values of Na % in wheat shoots and roots were significantly increased due to adding salinity levels over the control during both stage of growth. Concerning the effect of phosphorus application, the average of N, P and K% in wheat shoots and roots were increased significantly over the control. Adding P<sub>3</sub> level was superior for increasing aforementioned traits. Addition of P levels, however, had no significant effect on Na% in wheat shoots. This trend was observed during both stages of the experiments. With respect to the interactive effect between adding AM, salinity levels and phosphorus application, it could be realized that adding P<sub>3</sub> level with S<sub>0</sub> level combined with I<sub>1</sub> (AM inoculation) gave the highest value of N, P and K in wheat shoots and roots. However, the mean values of Na % did not significantly affected by treatments of the experiment.

**Keywords:** Mycorrhizal inoculation, salinity conditions, phosphorus fertilization, wheat plants.

### **INTRODUCTION**

Wheat is one of the most important grain crops. Raising wheat through increasing the productivity per unit area as well as expanding the cultivated area in newly reclaimed lands is a major important national target. Increasing productivity per unit area, particularly in saline conditions, could be achieved by cultivating high yielded cultivars along with importing agronomical practices. As a result, arbuscular mycorrhizal plants are often more competitive and better tolerant to the environmental stresses than non-mycorrhizal plants (Abdel-Fattah *et al.*, 2002; Paradi *et al.*, 2002; Kumar *et al.*, 2010; Asrar and ElHindi 2011).

Arbuscular mycorrhizal fungi (AMF) are a main component of the soil edaphon in most agro ecosystems. These obligate mutualistic symbionts colonize the roots of the majority of crop plants (Smith and Read 1997). AMF can efficiently absorb mineral nutrients (George *et al.*, 1995) by their extended hyphal network, especially from low fertile soils, and deliver them to their host plants in exchange for carbohydrates. Arbuscular mycorrhizal fungi employ different mechanisms to enhance salt tolerance of host plants such as enhancing nutrient acquisition (P, N and Ca) (Giri and Mukerji 2004; Sheng *et al.*, 2009), inhibiting high uptake of Na and Cl and their transport to plant shoots (Daei *et al.*, 2009) and improving water uptake and transport by plant xylem (Ruiz-Lozano and Azcon2000).

Phosphorus (P) is an essential nutrient element production of ATP, DNA, RNA, and other cell constituents of plants. It plays important roles in nearly all phases of the plant life, including photosynthesis, flowering, seed production, maturation, and root growth. Its deficiency can cause severe stunting and significant yield losses (Haven *et al.*, 1999). Soil-P is often a limiting nutrient for plant growth. The P concentration in soil solution is typically very low because soluble forms of P are fixed by soil solid phase, making less than 0.01% of total soil P available to plants (Gallaher, 2007; Mengel and Kirkby, 2001). Phosphorus, therefore, is considered one of the least mobile plant nutrients in soil.

Soil salinity is a worldwide dilemma, restricting plant growth and production, especially in arid, semiarid and tropical regions through reducing nutrients uptake and increasing osmotic stress of plants (Apse *et al.*, 1999; Abdel-Ghani 2009). Those regions are still increasing as a result of salt water irrigation and land degradation.

## **MATERIALS AND METHODS**

**Sowing:** A pot experiment was conducted at the experimental farm of Faculty of Agric., El-Mansoura Univ. during the winter season of 2008-2009 to investigate the uptake of applied and residual phosphorus by wheat (*Triticum aestivum* L.) plants as affected by mycorrhiza inoculation under saline condition. 24 treatments were arranged in split-split plots design, which were the simple possible combination between two treatments of mycorrhizal inoculation, three levels of salinity and four levels of P-fertilization. The following treatments were used:

- The mycorrhizal inoculations were adopted in main plots as follows: (I<sub>0</sub>) Control (without inoculation) and (I<sub>1</sub>) mycorrhizal inoculation (*Glomus mossea*, *G. intraradices* and *G. clarium*)
- The salinity levels were arranged in sub plots as follows: (S<sub>0</sub>) soil salinity of 1 dSm<sup>-1</sup> as the control treatment, (S<sub>1</sub>) salinity level of 6 dSm<sup>-1</sup> and (S<sub>2</sub>) salinity level of 9 dSm<sup>-1</sup>.
- P-fertilization levels were adopted as sub- sub plots as follows: (P<sub>0</sub>) without P-fertilization, P<sub>1</sub>, P<sub>2</sub> and P<sub>3</sub> as 50, 75 and 100% from the recommended P fertilization dose. The recommended dose of P fertilization is 100 Kg/fed

super phosphate (15.5% P<sub>2</sub>O<sub>5</sub>), these levels equals (0.27, 0.405 and 0.54 g /pot respectively).

Each treatment was replicated four times. 72 large plastic pots (20 cm. diameter and 50 cm. depth) were used. Each pot was filled with 5 kg air dried soil taken from the surface layer of a private farm located in Talkha city, Dakahlia Governorate. The soil was analyzed for some physical and chemical properties as shown in Table 1.

Wheat seeds were obtained from seeds production unit; Agriculture Research Center, Egypt. Ten seeds c.v. Sakha 93 were sown on November 27, 2008. 18 days after sowing, plants were thinned to five plants per pot. Two salt solutions were prepared at the rate of (6 and 9 dSm<sup>-1</sup>) of commercial salt i.e. (3.84 and 5.76 g/l.), respectively. The chemical analysis of the used commercial salt is illustrated in table 2.

**Table 1: Some physical and chemical properties of the experimental soil.**

Soil characteristics		values
Particle size distribution	Sand (%)	23.50
	Silt (%)	26.50
	Clay (%)	50.00
	Soil texture	Clay
Some physical and chemical properties	Field capacity (%)	35.0
	Saturation percentage	70.0
	Calcium carbonate (%)	4.00
	O.M. (%)	1.10
	pH (1:2.5)	7.80
	EC (dSm <sup>-1</sup> ) soil paste	1.00
Soluble cations (meq. L <sup>-1</sup> )	Ca <sup>+2</sup>	2.50
	Mg <sup>+2</sup>	0.70
	Na <sup>+</sup>	3.10
	K <sup>+</sup>	1.00
Soluble anions (meq. L <sup>-1</sup> )	CO <sub>3</sub> <sup>-2</sup>	-
	HCO <sub>3</sub> <sup>-</sup>	0.40
	Cl <sup>-</sup>	3.40
	SO <sub>4</sub> <sup>-2</sup>	3.80
Available nutrients (ppm)	Olsen-p (mg/kg soil)	3.87
	K (mg/kg soil)	305
Total nutrients (ppm)	N (mg/kg soil)	32

**Table 2: soluble cations and anions of the commercial salt (meq/l):**

Na <sup>+</sup>	Mg <sup>+2</sup>	Ca <sup>+2</sup>	SO <sub>4</sub> <sup>-2</sup>	Cl <sup>-</sup>	CO <sub>3</sub> <sup>-2</sup>
38	6	6	5	40	5

Plants were irrigated to catch the field capacity. Thereafter, soil moisture content was kept at 70% of soil field capacity by watering to the constant weight.

**Mineral fertilization:** Mineral NPK fertilizers were added according to the recommendation of the Ministry of Agriculture and Soil Reclamation. Nitrogen was added at 163 Kg/ fed. (0.88 g. / pot) in form of Urea (46%) in two equal doses after 25 and 60 days from sowing. Potassium was added at 50 days

**El-Hamdi, K. H. et al.**

after sowing in form of potassium sulphate (48%K<sub>2</sub>O) at 50 Kg/ fed (0.27 g. / pot). Phosphorus fertilizer was added as super phosphate (15.5% P<sub>2</sub>O<sub>5</sub>) at levels of 0, 50, 75 and 100 Kg/fed. i.e. (0, 0.27, 0.405 and 0.54 g. /pot respectively) with sowing.

**Bio fertilization:** a mixture of arbuscular mycorrhizal (AM) fungi including (*Glomus mossea*, *Glomus intraradices* and *Glomus clarium*) was used. The mycorrhizal inoculum consisted of root, hyphae, spores and growth media from pot culture of onion plants which was previously infected with *Glomus* spp. Grown for four months in pot culture. The inoculum dosage of AM was 2.0 g per pot containing approximately 250 spores. The inoculum was placed 3cm below wheat- germinated grains at sowing time.

Two and three plants were taken after 60 days (tillering growth stage) and 124 days (filling stage) from wheat seeds sowing, respectively from each plot and carried immediately to the laboratory. Plant samples were separated; weight and oven dried at 70°C till constant weight was reached. The dried plant samples were thoroughly ground and stored for chemical analysis.

**Soil analysis:** Particle size distribution was determined using the International Pipette Method as described by Piper (1950). pH value was measured in the 1:2.5 soil water suspension, EC value was measured by electrical conductivity meter in soil paste extract as dSm<sup>-1</sup> as described by Jackson (1967). Water saturation percentage was determined by the method described by the U.S.Salinity Laboratory Staff (1954). Organic matter was determined according to Walkley and Black method, Black (1965). Calcium carbonate was determined using Collin's calcimeter according to Piper (1950). Soluble carbonate and bicarbonate were determined by the titration with a standard HCl solution, Jackson (1967). Soluble calcium, magnesium and sulfate in soil paste extract by the titration with a standardized versenate solution, Jackson (1967). Soluble sodium and potassium were determined by a flame photometer, Jackson (1967). Soluble chloride was determined by titration with a standard silver nitrate solution, Jackson (1967).

Available N was measured using the conventional method of Kjeldahl as described by Bremner and Mulvany (1982). Available phosphorus was extracted by 0.5 N sodium bicarbonate and determined following the method of Olsen and Sommers, (1982). Available potassium was determined by flame photometer according to Black (1965).

**Plant Analysis:** The oven dried plant samples were ground and wet digested by sulphuric / perchloric acid mixture as described by Peterburgski (1968). Total nitrogen% was determined by using microkjeldahl method as described by Pregle (1945). Total phosphorus% was determined calorimetrically using the scorbic acid method as described by Murphy and Riley (1962). Potassium and sodium were determined in the digested plant materials using a flame photometer as described by Black (1965).

**Statistical analysis:** All data were statistically analyzed according to the technique of analysis of variance (ANOVA) and the least significant difference (L.S.D) method was used to compare the differences between the means of treatment according to the methods described by Gomez and Gomez, (1984). All statistical analyses were performed using analysis of variance technique

by means of CoStat (Version 6.303, CoHort, USA, 1998–2004). Computer Software.

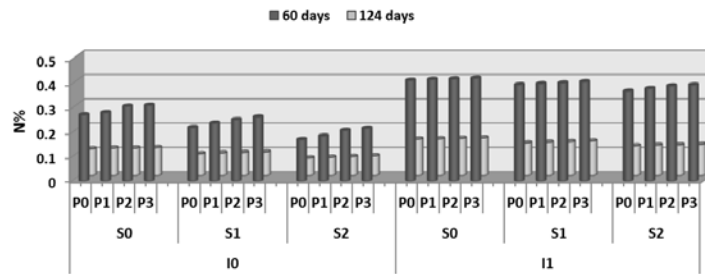
## RESULTS AND DISCUSSION

### Nitrogen, phosphorus and potassium concentration in wheat shoots:

Data illustrated in Figs. 1, 2 and 3 showed the effect of adding AM, salinity levels and phosphorus application on N, P and K concentrations in wheat shoots during both stage of planting. With regard to the effect of adding AM, the mean values of N, P and K% in shoot were significantly increased due to adding AM. On the contrary of this trend, the illustrated average values of N, P and K% in wheat shoots were significantly decreased as the level of salinity increased during both stages of plant growth.

Regarding the effect of phosphorus application, data at the same Figures reflected that; the average values of N, P and K% in wheat shoots were increased significantly over the control treatment by 1.44, 3.24 and 4.68% for N, 3.25, 7.47 and 9.42% for P and 0.93, 1.56 and 2.50% for K during the first stage. The same trend was true in the 2<sup>nd</sup> stage.

The difference comparison between the average values of N, P and K% in wheat shoots as affected by adding AM, salinity levels and phosphorus application were significantly increased. The highest values were 3.87, 0.424 & 3.98 for N, P and K in the 1<sup>st</sup> stage and 1.10, 0.155 & 1.35 for N, P and K in the 2<sup>nd</sup> stage and recorded with I<sub>1</sub>, S<sub>0</sub> level and P<sub>3</sub> level.



**Figure 1: Interaction effect of adding AM, salinity levels and phosphorus fertilization on nitrogen (N) concentration in wheat shoots after 60 and 124 days from sowing.**

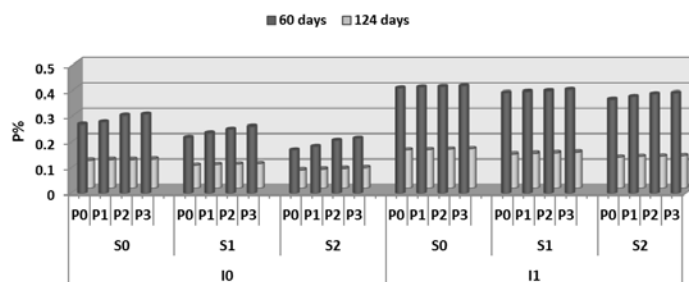


Figure 2: Interaction effect of adding AM, salinity levels and phosphorus fertilization on phosphorus (P) concentration in wheat shoots after 60 and 124 days from sowing.

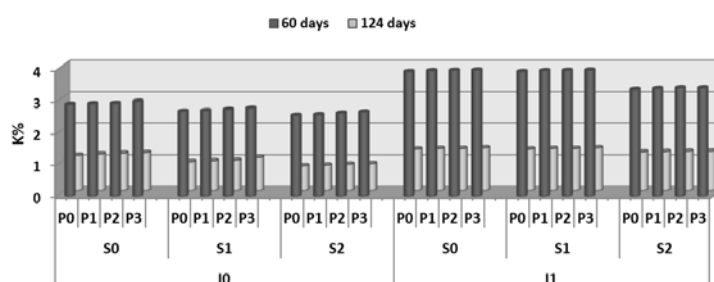


Figure 3: Interaction effect of adding AM, salinity levels and phosphorus fertilization on potassium (K) concentration in wheat shoots after 60 and 124 days from sowing.

#### Nitrogen, phosphorus and potassium concentration in wheat roots:

Effect of adding AM, salinity levels and phosphorus application and their interactions on N, P and K concentration in wheat roots are presented in Figs. 4, 5 and 6 during 1<sup>st</sup> stage (after 60 days) and 2<sup>nd</sup> stage (after 124 days) from sowing.

The effect of adding AM on N, P and K % in wheat roots were significantly increased with inoculating the soil with AM. The highest mean values of N, P and K % in wheat roots were 1.02, 0.175 and 1.82% in the 1<sup>st</sup> stage and 1.08, 0.178 & 1.83 in the 2<sup>nd</sup> stage. Optioned results are confirmed with those reported by Abo-Ghalia and Khalafallah (2008), Sharif *et al.*, (2010) and Singh and Singh (2007). The average values of N, P and K % in wheat roots present in the same figures were significantly decreased due to salinity levels was increased from S<sub>0</sub> level up to S<sub>3</sub> level during both stage of growth. Optioned results are confirmed with those reported by El-Etreiby (2000), Kaya *et al.*, (2001) and El-Arqan *et al.*, (2002).

Adding phosphorus fertilization significantly gave the higher magnitudes of N, P and K % in wheat roots. Adding P<sub>3</sub> level was superior for increasing aforementioned traits. For example the rate of increases over the untreated plants for N% were accounted to be 3.45, 5.75 and 8.05% in the 1<sup>st</sup> stage and 3.32, 6.45 and 9.68% in the 2<sup>nd</sup> stage for the treatment of P<sub>1</sub>, P<sub>2</sub> and P<sub>3</sub> levels, respectively. The results are confirmed with those reported by Chaturvedi (2006), You *et al.*, (2007), Bonde *et al.*, (2008) and Sher *et al.*, (2010). Concerning the effect of the interaction between adding AM, salinity and phosphorus applications levels, it can be noticed that adding P<sub>3</sub> level and S<sub>0</sub> level combined with I<sub>1</sub> (AM inoculation) gave the highest value of N, P and K % in wheat roots. The highest values were recorded as 1.23, 0.193 and 1.98% in the 1<sup>st</sup> stage and 1.29, 0.212 & 2.00% in the 2<sup>nd</sup> stage for N, P and K %, respectively.

Soil salinity significantly reduces the absorption of the mineral nutrients, mainly P, N and K in non-mycorrhizal plants. AM-inoculated plants had significantly greater concentrations of (P) Azcon and Atrash (1997) and Roychoudhury *et al.*, (2010), (N) Founoune *et al.*, (2002) and K than those of non-mycorrhizal plants. These findings allow us to deduce that the increased salinity tolerance in mycorrhizal plants is based on P nutrition and other minerals ( Azcon and Atrash 1997). In saline soil, higher absorption of P in AM-inoculated plants may improve growth rate, salt tolerance and suppress the adverse effect of the salinity stress Kumar *et al.*, (2010). In addition, Duke *et al.*, (1986) concluded that in addition to P uptake enhancement, there were some other mechanisms such as induction of the osmotic materials that led to osmotic adjustment and improved salt tolerance in mycorrhizal plants.

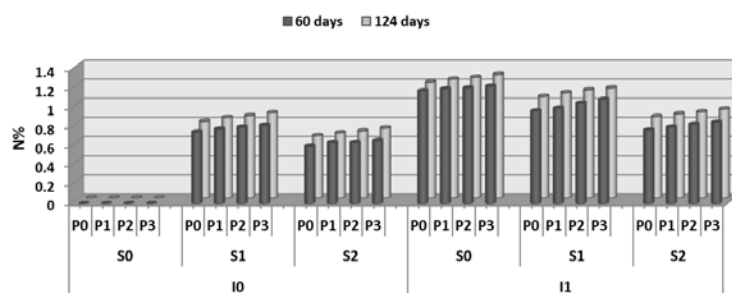


Figure 4: Interaction effect of adding AM, salinity levels and phosphorus fertilization on nitrogen (N) concentration in wheat roots after 60 and 124 days from sowing.

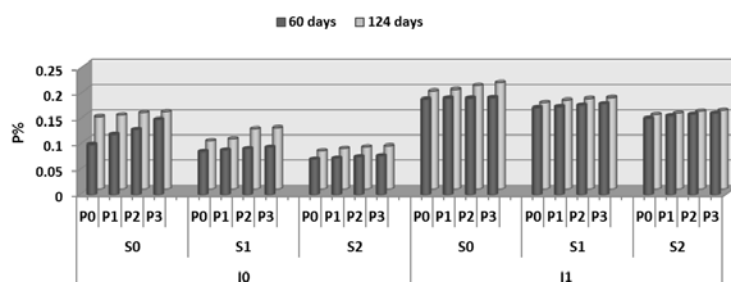


Figure 5: Interaction effect of adding AM, salinity levels and phosphorus fertilization on phosphorus (P) concentration in wheat roots after 60 and 124 days from sowing.

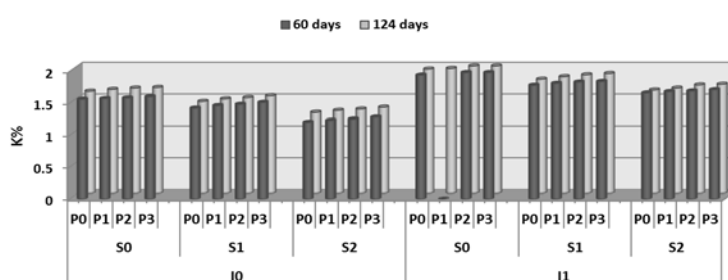


Figure 6: Interaction effect of adding AM, salinity levels and phosphorus fertilization on potassium (K) concentration in wheat roots after 60 and 124 days from sowing.

#### Sodium concentration in wheat shoots and roots:

Sodium concentration in wheat shoots and roots as influenced by adding AM, salinity levels and phosphorus applications as well as interactions were presented in Figs. 7 and 8 during 1<sup>st</sup> and 2<sup>nd</sup> stages of growth.

The mean values of Na % in wheat shoots and roots were significantly affected by inoculating AM. In this respect, as inoculation AM the mean value of Na% in shoots decreased on contrary of the mean value of Na% in roots was increased. This trend was true during both stage of planting.

On the other hand, the mean values of Na % in wheat shoots and roots were significantly increased due to adding salinity levels over the control. In other words, the rate of increase over the control for Na% by wheat shoots and roots were accounted to be 12.82, 25.64% and 30.77, 65.38% in the 1<sup>st</sup> stage and 13.14, 28.95% and 21.43, 42.86% in the 2<sup>nd</sup> stage, respectively.



Such data reveal that; using phosphorus application had no significant effect on Na % in wheat shoots and roots during 1<sup>st</sup> and 2<sup>nd</sup> stages of planting.

With respect to the interactive effect between inoculating AM, as well as salinity levels and phosphorus application, inoculating AM under any level of salinity with using phosphorus fertilization had no significant effect on Na % in wheat shoots and roots during 1<sup>st</sup> and 2<sup>nd</sup> stage of planting.

Obtained results are in agreement with those obtained by Ali *et al.*, (2000), Akbarimoghaddam *et al.*, (2011), Tahir *et al.*, (2011) Also, Abdel-Fattah and Asrar (2012)

Mycorrhizal colonization of a plant with AMF can reverse the effect of salinity on K<sup>+</sup> and Na<sup>+</sup> Nutrition. Mycorrhizal colonization can enhance K<sup>+</sup> absorption under saline conditions Alguacil *et al.*, (2003); Giri *et al.*, (2003) and Zuccarini and Okurowska (2008) while preventing Na<sup>+</sup> translocation to shoot tissues. Na<sup>+</sup> uptake may also be influenced by the synthesis and storage of polyphosphate Olovich and Ashford (1993) as well as by other cations, particularly K<sup>+</sup> Giri *et al.*, (2003). The uptake of K<sup>+</sup> increased in shoot tissues of mycorrhizal plants even at a high salinity level (9.5dSm<sup>-1</sup>). This increases the K<sup>+</sup>: Na<sup>+</sup> ratio in roots and shoots of AM plants Giri and Mukerji (2004).

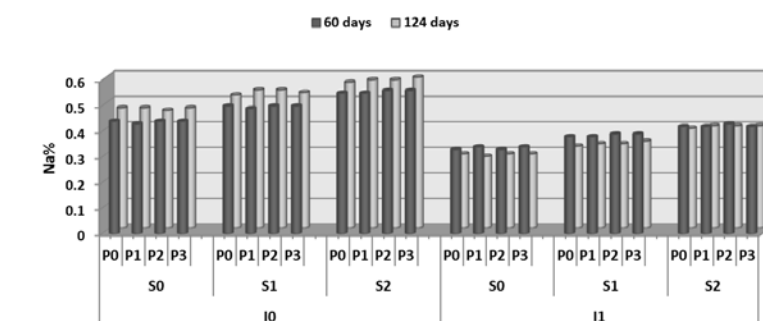


Figure 7: Interaction effect of inoculating adding AM, adding salinity levels and phosphorus fertilization on sodium (Na) concentration in wheat shoots after 60 and 124 days from sowing.

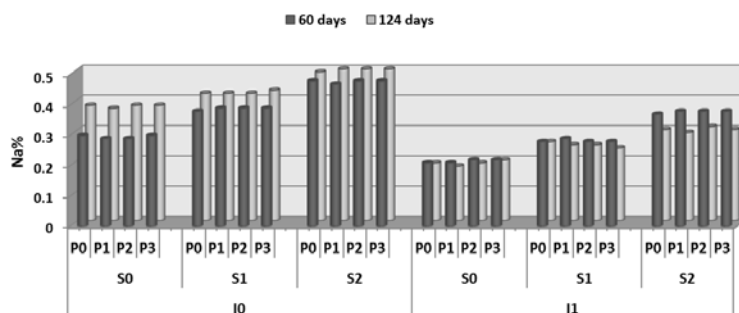


Figure 8: Interaction effect of inoculating AM, adding salinity levels and phosphorus fertilization on sodium (Na) concentration in wheat roots after 60 and 124 days from sowing.

## CONCLUSION

Based on the obtained results of this study it could be concluded that using mycorrhiza inoculation coupled with mineral fertilization increase the availability of plant nutrients and production and reduces the soil pollution resulted from mineral fertilizers.

## REFERENCES

- Abdel-Fattah, G. M. and A. A. Asrar (2012). Arbuscular mycorrhizal fungal application to improve growth and tolerance of wheat (*Triticum aestivum* L.) plants grown in saline soil. *Acta Physiol Plant.*, 34:267–277.
- Abdel-Fattah, G. M.; F. F. Migahed and A. H. Ibrahim (2002). Interactive effects of endomycorrhizal fungus *Glomus etunicatum* and phosphorus fertilization on growth and metabolic activities of broad bean plants under drought stress conditions. *Pak. J. Biol. Sci.*, 5:835–841.
- Abdel-Ghani, A. H. (2009). Response of wheat varieties from semi-arid regions of Jordan to salt stress, *J. Agron Crop Sci* 195:55–65.
- Abo-Ghaila, H. H. and A. A. Khalafallah (2008). Responses of wheat plants associated with arbuscular mycorrhizal fungi to short-term water stress followed by recovery at three growth stages. *J. Applied Sci. Res.*, 5: 570-580. 71 ref.
- Akbarimoghaddam, H.; M. Galavi, A. Ghanbari and N. Panjehkeh (2011). Salinity effects on seed germination and seedling growth of bread wheat cultivars. *Trakia J. Sci.*, 9 (1): 43-50. 29 ref.

Alguacil MM, JA Hernandez, F. Caravaca, B. Portillo, and A. Roldan. (2003). Antioxidant enzyme activities in shoots from three mycorrhizal shrub species afforested in a degraded semi-arid soil. *Physiol Plantarum* 118: 562 – 570.

Ali, S. H.; I. Z. El-Shamey and S. S. Eisa (2000). Sodium potassium balance and adaptation of sugar beet to salt stress. Conf. Agric. Dev. Res. Fac. Agric. Ain Shams Univ, Cairo, Egypt, Ann Agric. Sci., Special Issue 2000, 1, 41-56.

Apse, M. P.; G. S. Dharon, W. A. Snedden and E. Bumerold (1999). Salt tolerance conferred by overexpression of a vacuolar Na/H antiport in *Arabidopsis*. *Science* 258:1256–1258.

Asrar, A. A. and M. Elhindi (2011). Alleviation of drought stress of marigold (*Tagetes erecta*) plants by using arbuscular mycorrhizal fungi. *Saudi J. Biol. Sci.*, 19:38–46.

Azcon R, Atrash F (1997) Influence of arbuscular mycorrhizae and phosphorus fertilization on growth, nodulation and N<sub>2</sub> fixation(N<sub>2</sub>) in *Medicago sativa* at four salinity levels. *Biol Ferti Soils* 24:81–86.

Black, C. A. (1965). *Methods of Soil Analysis. Part 2.* Amer. Soci. of Agric. [NC] Publisher, Madison, Wisconsin.

Bonde, A. S.; P. A. Deshmukh, S. B. Band and S. S. Mahalle (2008). Availability of phosphorus to wheat crop under different organic and inorganic combinations in vertisols. *J. Soils and Crops*. 18 (1): 192-196.

Bremner, J. M.; and C. S. Mulvaney (1982). Total N. P. 595. 616. in Page, A. L. et al., (ed.) "Methods of Soil Analysis". Part2: Chemical and Microbiological Properties. Amer. Soc. of Agron., Inc., Madison, Wis., USA.

Chaturvedi, I. (2006). Effects of different phosphorus levels on growth, yield and nutrient uptake of wheat (*Triticum aestivum L.*). *Inter. J. Plant Sci.*, (Muzaffarnagar). 1 (2): 278-281.

CoStat version 6.303 copyright (c) 1998-2004, CoHort Software 798 Lighthouse Ave. PMB 320, Monterey, CA, 93940, USA.

Daei, G.; M. R. Ardekani, F. Rejali, S. Teimuri and M. Miransari (2009). Alleviation of salinity stress on wheat yield, yield components, and nutrient uptake using arbuscular mycorrhizal fungi under field conditions. *J. Plant Physiol* 166:617–625.

Duke ER, Johnson CR, Koch KE. (1986). Accumulation of phosphorus, dry matter and betaine during NaCl stress of split-root citrus seedlings colonized with vesicular-arbuscular mycorrhizal fungi on zero, one or two halves. *New Phytologist* 104: 583 – 590

El-Arqan, M. Y.; Kh. H. El-Hamdi, E. M. Seleem and I. M. El- Tantawy (2002). Nutrient uptake of sugar beet as affected by NPK fertilization and soil salinity levels. *Egypt. J. soil Sci.*, 42 (4): 783-797.

El-Etreiby, F. (2000). Effect of salin irrigation water and micronutrient foliar application on sugar beet cultivars. *Alex. Sci. Exch.* Vol. 21 (4): 397 – 407.

منسّق: الخط: Arial، ١٠ نقطة، خط اللغة العربية وغيرها: ١٠ نقطة، (العربية وغيرها) العربية (المملكة العربية السعودية)

منسّق: الخط: Arial، ١٠ نقطة، خط اللغة العربية وغيرها: ١٠ نقطة، (العربية وغيرها) العربية (المملكة العربية السعودية)

*El-Hamdi, K. H. et al.*

Founoune H; R. Duponnois R, AM; Ba and F. El-Bouami (2002). Influence of the dual arbuscular endomycorrhizal/ectomycorrhizal symbiosis on the growth of *Acacia holosericea* (A. Cunn. Ex G. Don) in glasshouse conditions. *Ann For Sci* 59:93–98.

Gallaher, C. M. (2007). Phosphorus availability in annual and perennial cropping system. MSc. Thesis. Department of Crops and Soil Science. Michigan State University, East Lansing, MI.

George, E.; H. Marschner and I. Jakobsen (1995). Role of arbuscular mycorrhizal fungi in uptake of phosphorus and nitrogen from soil. *Critical Rev in Biotechnology* 15: 257–270.

Giri B, Kapoor R, Mukerji KG. (2003). Influence of arbuscular mycorrhizal fungi and salinity on growth, biomass and mineral nutrition of *Acacia auriculiformis*. *Biology and Fert Soils*38: 170 – 175

Giri, B. and K. G. Mukerji (2004). Mycorrhizal inoculant alleviates salt stressing *Sesbania aegyptiaca* and *Sesbania grandiflora* under field conditions: evidence for reduced sodium and improved magnesium uptake. *Mycorrhiza* 14:307–312.

Gomez, K. A. and A. A. Gomez (1984). "Statistical Procedures for Agricultural Research". John Wiley and Sons, Inc., New York. pp:680.

Haven, P. H.; R. F. Evert and S. E. Eichhora (1999). *Biology of Plants*. 6th ed. (WH Freeman and Company Worth Publishing: New York).

Jackson, M. L. (1967). "Soil Chemical Analysis, advanced course" Puble. By the auther, Dept. of Soils, Univ. of Wise., Madison 6, Wisconsin, U.S.A.

Kaya, C.; H. Kimar and D. Higgs (2001). Enhancement of growth and normal growth parameters by foliar application of potassium and phosphorus on tomato cultivars growth at high (NaCl) salinity. *J. Plant Nutr.*, 24: 357-367.

Kumar, A.; S. Sharma and S. Mishra (2010). Influence of arbuscular mycorrhizal (AM) fungi and salinity on seedling growth, solute accumulation and mycorrhizal dependency of *Jatropha curcas* L. *J Plant Growth Regul* 29:297–306.

Mengel, K. and E. A. Kirkby (2001). *Principles of Plant Nutrition*, 5th ed. International Potash Institute, Worblaufen-Bern, Switzerland. 687 p.

Murphy, J., and J.P. Riley (1962). A modified single solution method for the determination of phosphate in natural waters. *Anal. Chem. Acta* 27:31-36.

Olovich DA and AE. Ashford AE. (1993). Polyphosphate granules are artifact of specimen preparation in the ectomycorrhizal fungus *Pisolithus tinctorius*. *Protoplasma*173: 91 – 102

Olsen, S. R. and L. E. Sommers (1982). Phosphorus. P. 403-130. in Page, A. L. et al. (eds) *Methods of soil Analysis. Part2: Chemical and Microbiological properties*. Am. Soc. of Agron., Inc. Madison, Wis, USA.

Paradi, I.; Z. Bratek, K. Berecz and K. Halasz (2002). Influence of arbuscular mycorrhiza, P limitation and Cd-stress on polyamine contents of plants. *Acta Biologica Szegediensis* 46:59–60.

Peterburgski, A. V. (1968). "Hand Book of Agronomic Chemistry". Kolas publishing House, Moscow, (in Russian), pp. 29-86.

منسّق: الخط: Arial، ١٠ نقطة، مائل، خط  
اللغة العربية وغيرها: ١٠ نقطة، مائل

منسّق: الخط: Arial، ١٠ نقطة، مائل، خط  
اللغة العربية وغيرها: ١٠ نقطة، مائل

- Piper, C. S. (1950). "Soil and Plant Analysis". Inter Science Publishers Inc. New York.
- Pregle, E. (1945). "Quantitative Organic Micro-Analysis" 4<sup>th</sup> Ed. J. Chudrial, London.
- [Roychoudhury A, S. Basu and DN. Sengupta \(2010\) Amelioration of salinity stress by exogenously applied spermidine or spermine in three varieties of indica rice differing in their level of salt tolerance. J. Plant Physio 18:12–17](#)
- Ruiz-Lozano, M. and R. Azcon (2000). Symbiotic efficiency and infectivity of an autochthonous arbuscular mycorrhizal *Glomus* sp. From saline soils and *Glomus deserticola* under salinity. *Mycorrhiza* 10:137–143.
- Sharif, M.; E. Ahmad, M.S. Sarir and S. Perveen (2010). Response of different crops to arbuscular mycorrhizal inoculation in phosphorus deficient soil. *Soil and Environ.*, 29 (2): 192-198.
- [Sharifi M, M.Ghorbanli and H. Ebrahimzadeh \(2007\). Improved growth of salinity-stressed soybean after inoculation with pre-treated mycorrhizal fungi. of Plant Physio164: 1144 – 115.](#)
- Sheng, M.; M. Tang, H. Chen, B. Yang, F. Zhang and Y. Huang (2009). Influence of arbuscular mycorrhizae on the root system of maize plants under salt stress. *Can. J. Microbio* , 55:879–886.
- Sher, A.; N. E. Jan, R. Khan; R. Khan; Faridullah and N. Din (2010). Wheat response to phosphorus under climatic conditions of Juglote, Pakistan. *Sarhad J. Agric.*, 26 (2): 229-233.
- Singh, S. R. and H. P. Singh (2007). Occurrence of VAM in Uttaranchal and their effectiveness on colonization growth and NPK uptake on wheat. *Environ. and Ecology*. 25 (3): 526-530.
- Smith, S. E. and D. J. Read (1997). *Mycorrhizal Symbiosis*, 2nd edition. Academic Press Ltd., London, England.
- Tahir, M. A.; A. Tariq and Rahmatullah (2011). Silicon-induced growth and yield enhancement in two wheat genotypes differing in salinity tolerance. *Communic in Soil Sci. and Plant Analysis*. 42 (4): 395-407.
- U. S. Salinity Laboratory Staff (1954). *Diagnosis and Improvement of Saline and Alkali Soils*. USDA Agric. Hand Book No. 60, Washington, D.C.
- You, J.; C. A. Grant and L. D. Bailey (2007). Growth and nutrient response of flax and durum wheat to phosphorus and zinc fertilizers. *Canad J. Plant Sci.*, 87 (3): 461-470. 27 ref.
- [Zuccarini P, Okurowska P. \(2008\).Effects of mycorrhizal colonization and fertilization on growth and photosynthesis of sweet basil under salt stress. Plant Nutr31: 497 – 513.](#)

## النمو والمصقول وامتصاص العنصر بواسطة نباتات القمح متأثرة بمعدلات الفوسفور والتلقيح بالميكور هيزا تحت الظروف الملحية. خالد حسن الحامدي، أحمد على موسى و محمد السيد راضى. قسم الاراضى – كلية الزراعة – جامعة المنصورة.

نفذت تجربة أصص في المزرعة التجريبية، كلية الزراعة، جامعة المنصورة في خلال الموسم الشتوي 2008-2009 وذلك لدراسة تأثير إمتصاص الفوسفات المضاف والمتبقى بواسطة نباتات القمح وتأثرها بالتلقيح بالميكور هيزا تحت الظروف الملحية

اشتملت التجربة على أربعة وعشرين معاملة في تصميم قطاعات تحت منشقه وهي تمثل كل التفاعلات الممكنة بين معاملتان من سلالات الميكرو هيزا ، وثلاث معاملات من الملوحة بالإضافة الى 4 معاملات من التسميد الفوسفاتى. و تم توزيع التجربة كالتالى:-

- سلالات الميكرو هيزا كمعاملات رئيسية: (I<sub>0</sub>) معاملة الكنترول ( بدون سلالة) ، (I<sub>1</sub>) سلالات من النوع (*G. clarium* و *G. intraradices* ، *Glomus mossea*) .
- مستويات الملوحة كقطاعات منشقه:- معاملة الكنترول ( S<sub>0</sub> ) ، مستوى ملوحة 6 ديسمنز/سم (S<sub>1</sub>) ، مستوى ملوحة 9 ديسمنز/سم (S<sub>2</sub>) .
- مستويات التسميد الفوسفاتى كقطع تحت منشقه:- (P0) بدون تسميد، 50% من الموصى به (P1)، 75% (P2) و 100% (P3) .

اظهرت نتائج البحث انه بالتلقيح بسلالة الميكور هيزا قيم متوسطات النيتروجين والفوسفور والبيوتاسيوم للسيقان والجذور (%) والصوديوم فى الجذور حدث لها زيادة معنوية بينما قيم متوسطات الصوديوم فى السيقان حدث بها نقص نتيجة اضافة التلقيح بالميكرو هيزا. حثت هذه النتيجة خلال مرحلتى النمو.

خلال هذه التجربة وجد انه مع زيادة مستويات الملوحة قيم متوسطات النيتروجين والفوسفور والبيوتاسيوم للسيقان والجذور (%) حدث لها نقص معنوى ومن اتجاه اخر قيم متوسطات الصوديوم فى السيقان والجذور (%) حدث بها زيادة معنوية مع الزيادة فى مستويات الملوحة اعلى من المعاملة بالكنترول خلال مرحلتى النمو للنبات.

وجد انه مع الاضافات الزائده من التسميد الفوسفاتى قيم متوسطات النيتروجين والفوسفور والبيوتاسيوم للسيقان والجذور (%) حدث بها زيادة اعلى من الكنترول حيث ان اضافة اعلى تسميد فوسفاتى اعطى اعلى القيم اما بالنسبة لمتوسطات قيم الصوديوم فى السيقان والجذور (%) لم يحدث بها تأثير معنوى. وبناءً على النتائج المتحصل عليها من التجربة يوصى باضافة الميكور هيزا الى التسميد المعدنى لزيادة توفر العناصر الغذائية والانتاج وتقليل تلوث التربة من الاسمدة المعدنية.

### قام بتحكيم البحث

كلية الزراعة – جامعة المنصورة  
مركز البحوث الزراعية

أ.د/ زكريا مسعد الصيرفى  
أ.د/ حسن جمعه ابو الفتوح